

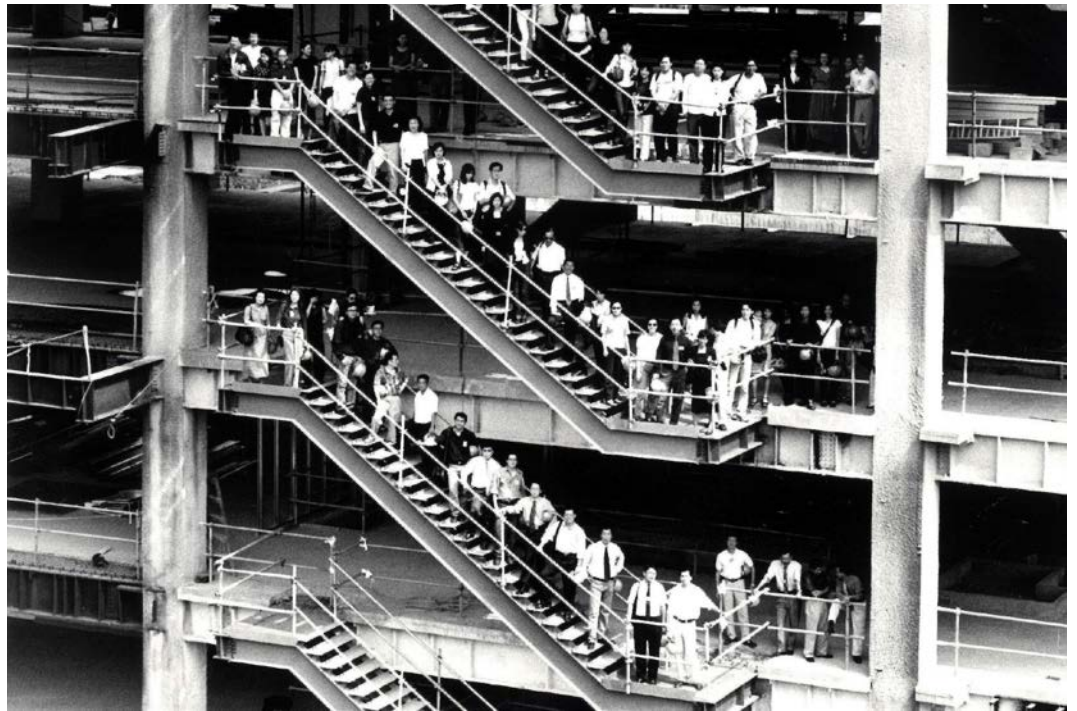
**KRIS  
YAO  
ARTECH**

姚 仁 喜  
大 元  
建 築 工 場

KRIS  
YAO  
ARTECH

姚仁喜  
大元  
建築工場

## FIRM PROFILE



KRIS YAO | ARTECH is an Asia-based architectural firm comprised of more than 160 professionals with offices in Taipei and Shanghai. Our projects are mainly located in the Greater China area, but are also found in the United States, Europe, Africa and South Asia. Established in 1985 by Kris Yao, Hon. FAIA, the firm is one of the most influential architectural professional practice in Asia, as well as an internationally renowned firm. Using a creative and critical design process supplemented with extensive professional experience, our mission is to deliver high quality projects. Although architecture is at the core of our practice, our involvement in projects often extends to feasibility studies, master planning, and programming. Our firm's portfolio demonstrates years of practice in cultural, corporate, commercial, hotels, performing arts centers, transportation, education, residential, spiritual spaces and urban design.

Our design philosophy strives to achieve excellence in design, by respecting and incorporating the needs of the clients, exploring the originality of the site context, and finding ways to employ innovative yet appropriate technologies, to create architectural works with cultural significance and poetic expression, without being preoccupied in expressing the architect's stylistic signature. The variety and breadth of projects in our portfolio convey that the range and depth of experience at KRIS YAO | ARTECH is one of its greatest assets. At the start of a project, a project team is formed and is actively involved in the design process through construction to maintain optimum consistency. In addition, a principal and an associate engage in every project to ensure quality and expert execution. We choose qualified consultants with a wide knowledge base and an emphasis on accountability to the client. We also often collaborate with renowned international professional consultants to execute large or complex projects. Here at KRIS YAO | ARTECH we understand that great design is most important in the success of our firm.

KRIS YAO | ARTECH's selected works have been widely published in international magazines, architectural journals, and various monographs. The major ones are: the 2001 published "Kris Yao/ Artech- Selected and Current Works", the 2011 published "Architecture of Kris Yao," and the 2015 published "KRIS YAO | ARTECH 30x30."

KRIS  
YAO  
ARTECH

姚仁喜  
大元  
建築工場

FOUNDER



## Kris Yao, Hon. FAIA

Kris Yao is the founder of KRIS YAO | ARTECH. He obtained a Bachelor of Architecture from Tunghai University in 1975, and a Master of Architecture from the University of California, Berkeley, in 1978.

Throughout his 30 years of practice, Mr. Yao has received numerous awards and recognitions, including the Distinguished Alumnus Award from the College of Environmental Design at the University of California, Berkeley, in 2005, the National Award for Arts in Taiwan in 2007, and the prestigious Honorary Fellowship from the American Institute of Architects (Hon. FAIA) in 2014. Mr. Yao's works have been widely published in international magazines and architectural journals.

Kris Yao has taken part in many international architectural exhibitions. In 2002, the Hsinchu High Speed Rail Station project was exhibited in the 8th Int'l Architectural Biennale, and continued to be exhibited in the 1st Rotterdam Int'l Architectural Biennial in 2003. In 2004 the Drape House was exhibited in the 1st Beijing Int'l Architectural Art Biennial. In 2008, he was invited to rejoin the Taiwan team for the 11th Venice Int'l Architectural Biennale. In 2013, the project Palace Museum, Southern Branch was exhibited at the International Architecture Showcase (IAS) in London. In 2014, Mr. Yao participated again in the Venice Biennale Collateral event "Time Space Existence". In 2015, "30x30" solo exhibition took place in Beijing, and in 2016, another solo exhibition "WithIn•WithOut" was held in MoCA, Shanghai.

Mr. Yao's architecture integrates function with culture and history, presenting a unique approach that celebrates the spirit of the locality. The AIA praised him as an architect who "demonstrates his humanity with the development of physical elements that hold true to human emotion and conditions, cultural and historical context, and a sense of scale and place. His architecture has a poetic nature, using his native eastern aesthetic and spirituality with a sense of natural light, interplay of surfaces and forms and executing all with a high level of innovation and professionalism."



KRIS  
YAO  
ARTECH

姚仁喜  
大元  
建築工場

ARCHITECTURE  
TYPES

CULTURAL

CORPORATE

COMMERCIAL

HOTELS

PERFORMING ARTS  
CENTERS

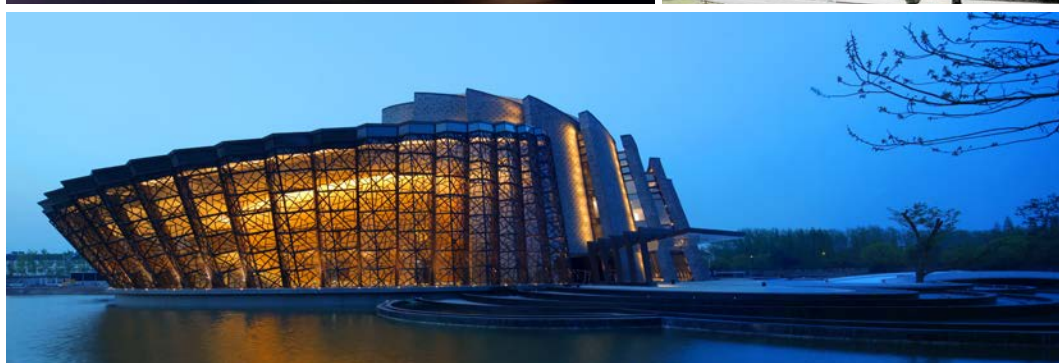
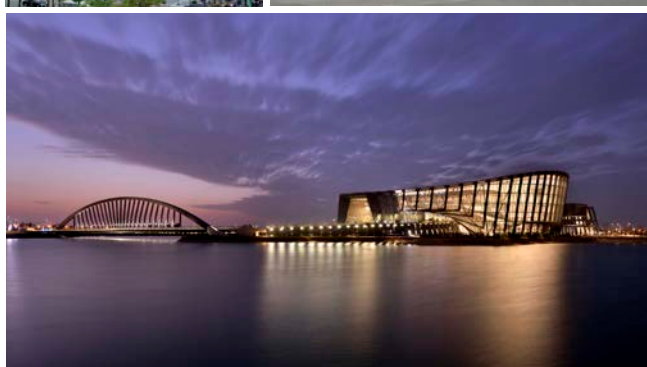
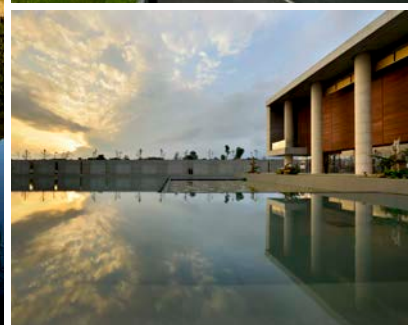
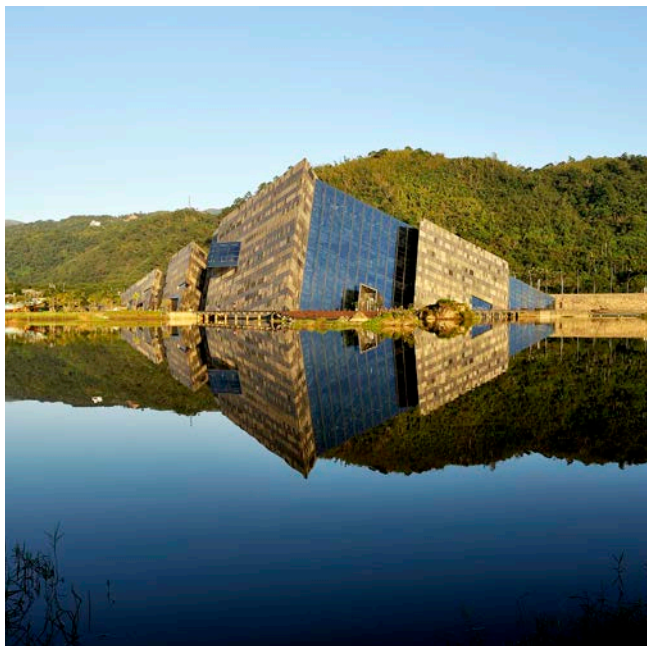
TRANSPORTATION

EDUCATION

RESIDENTIAL

SPIRITUAL SPACES

URBAN DESIGN

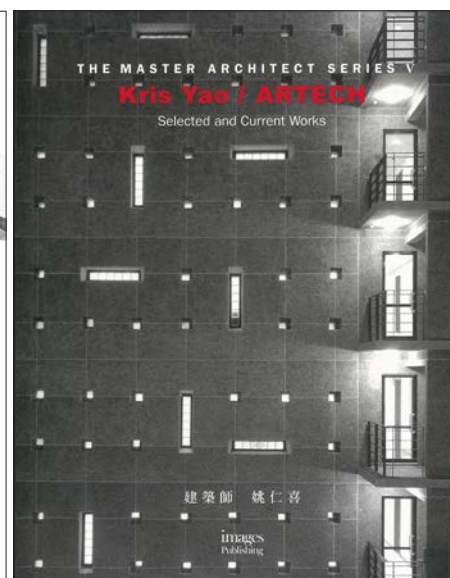
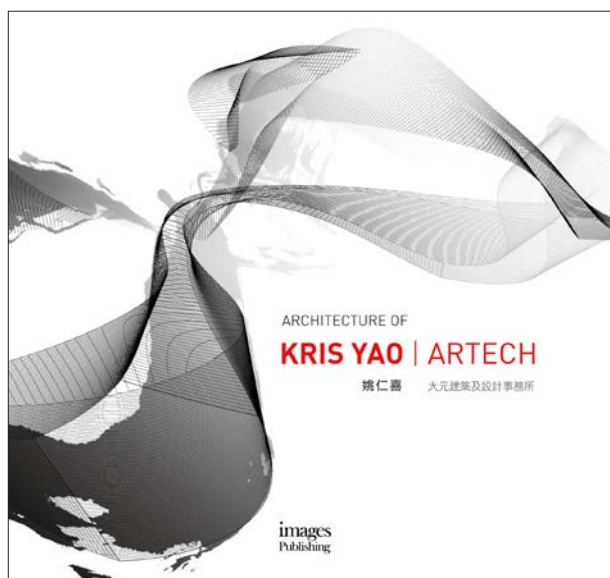




KRIS  
YAO  
ARTECH

姚仁喜  
大元  
建築工場

PUBLICATION





KRIS  
YAO  
ARTECH

姚仁喜  
大元  
建築工場

CULTURE



## LANYANG MUSEUM, YILAN

Completion: 2010 / 4stories / GFA:12,472 m<sup>2</sup>

2010 1st Prize, 7th Annual Far Eastern Architectural Design Award Museum

2010 1st Prize, 2010 Taiwan Architecture Award

2010 Superior Construction Quality Award – 10th Public Construction Golden Quality Awards for Outstanding Public Architectural Construction

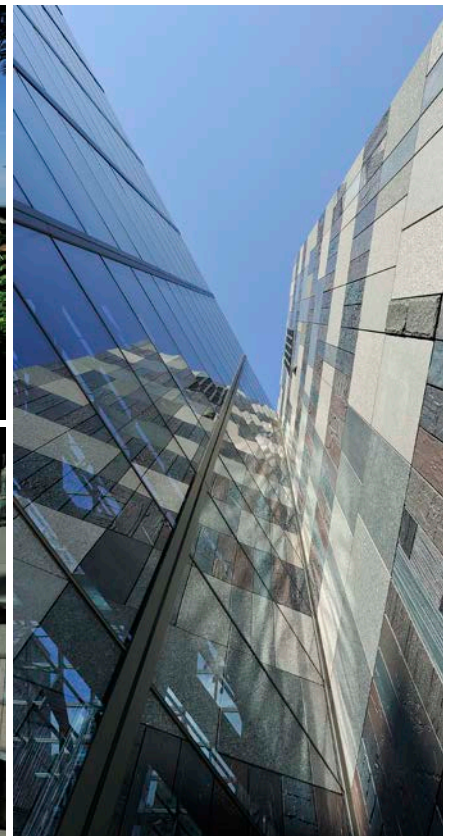
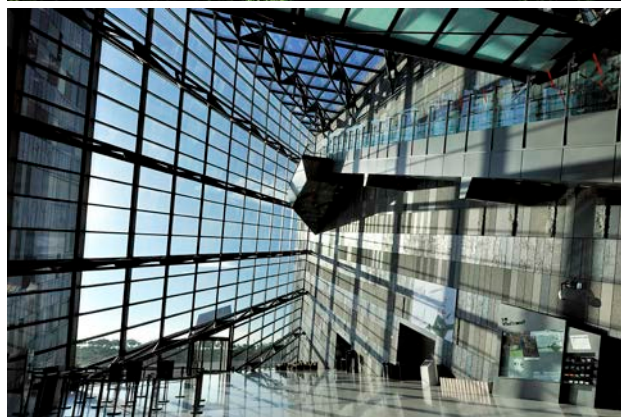
2011 FIABCI-Taiwan Real Estate Excellence Award – Construction Quality Category Excellence Award

2011 The International Awards for Liveable Communities – built Project golden Awards

2012 The Chicago Athenaeum Museum of Architecture and Design, The European Centre Architecture Art Design and Urban Studies: The International Architecture Award

2012 Perspective Awards 2012 Certificate of Excellence in Heritage Category

2013 UED Museum Architectural Design Award - Award of Merit



KRIS  
YAO  
ARTECH

姚仁喜  
大元  
建築工場

CULTURE



## PALACE MUSEUM-SOUTHERN BRANCH

Completion: 2015 / 3 stories / GFA: 35,374 m<sup>2</sup>

2011 1st Prize, National Palace Museum Southern Branch competition

2013 International Architecture Showcase (IAS)—Palace Museum, Southern Branch, Taiwan representative to anticipate the exhibition

2016 Taiwan Architecture Award Special Award





KRIS  
YAO  
ARTECH

姚仁喜  
大元  
建築工場

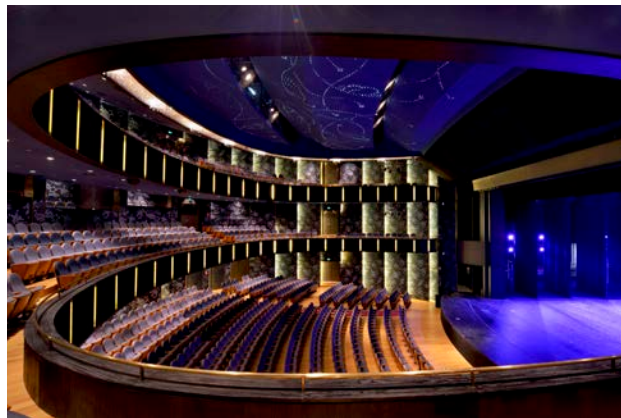
PERFORMING  
ARTS CENTERS



## WUZHEN THEATER

Completion: 2013 / 5 stories+B1 / GFA: 21,750 m<sup>2</sup>

2013 World Architecture Festival Award (Singapore) Shortlisted - Culture Category Wuzhen Theater





KRIS  
YAO  
ARTECH

姚仁喜  
大元  
建築工場

SPIRITUAL  
SPACES



遠東建築獎  
FAR EASTERN ARCHITECTURAL DESIGN AWARDS



## WATER-MOON MONASTERY, TAIPEI

Completion: 2012 / 2 stories+B1 / GFA: 8,056 m<sup>2</sup>

2013 WACA Architectural Design Award (China) Award of Merit

2013 World Architecture Festival Award (Singapore) Shortlisted - Religion Category

2013 Taiwan Architecture Award – First Prize

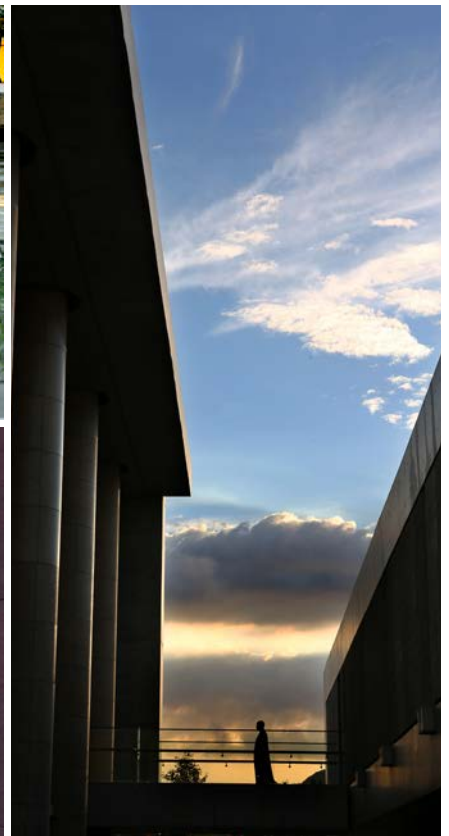
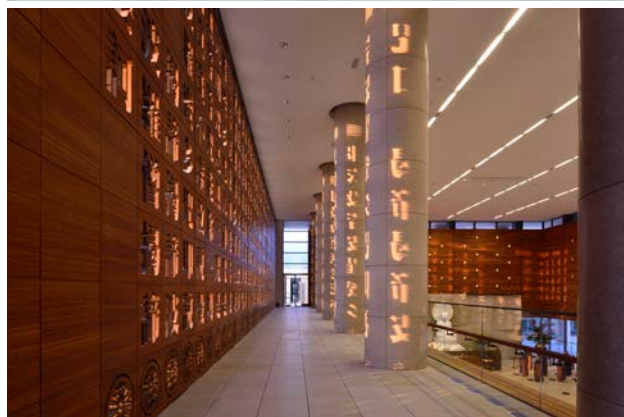
2014 The Far Eastern Architectural Design Award - Honorable Mention & Most Popular Award

2014 Design For Asia (DFA) Awards

2014 Water Moon Monastery has been awarded the “National Architecture Awards, 2014”

2014 Taipei Urban Landscape Award, Taipei City Government

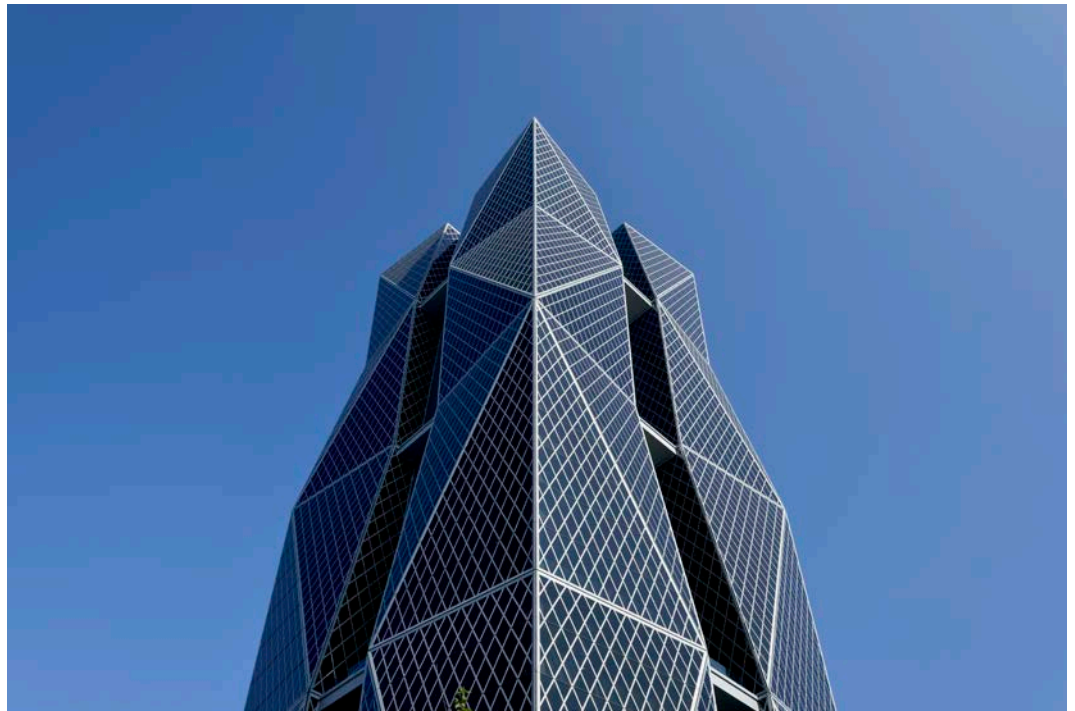
2014 First Prize of Excellence in Concrete Construction Awards



KRIS  
YAO  
ARTECH

姚仁喜  
大元  
建築工場

CORPORATE



## CHINA STEEL CORPORATION HEADQUARTERS, KAOSHUNG

Completed: 2012 / 29 stories+B3 / GFA: 81,054 m<sup>2</sup>

2012 The 1st Kaohsiung City Green Building Award Kaohsiung City Government, China Steel Corporation Headquarters  
2013 The 1st Architizer A+ Awards (U.S.A.) Jury Winner - High Rise Office (16+) China Steel Corporation Headquarters  
2014 The Chicago Athenaeum Museum And European Centre For Architecture (U.S.A + Ireland) International Architecture Award





KRIS  
YAO  
ARTECH

姚仁喜  
大元  
建築工場

CORPORATE



## HUA NAN BANK HEADQUARTERS

Completed: 2014 / 27 stories+B2 / GFA: 51,751 m<sup>2</sup>

2016/ China Best Tall Building China Honorable Distinction

2017/ Excellent Green Building (Taiwan Green Building Council)



KRIS  
YAO  
ARTECH

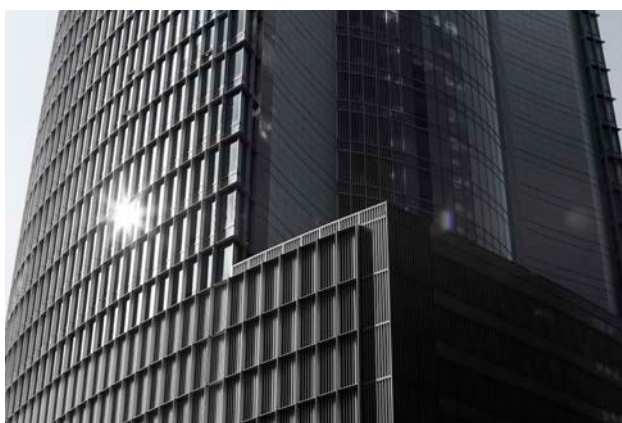
姚仁喜  
大元  
建築工場

CORPORATE



## FAR EASTERN BANCIAO SKYSCRAPER

Completed: 2014 / 50 stories+B4 / GFA: 122,906 m<sup>2</sup>





KRIS  
YAO  
ARTECH

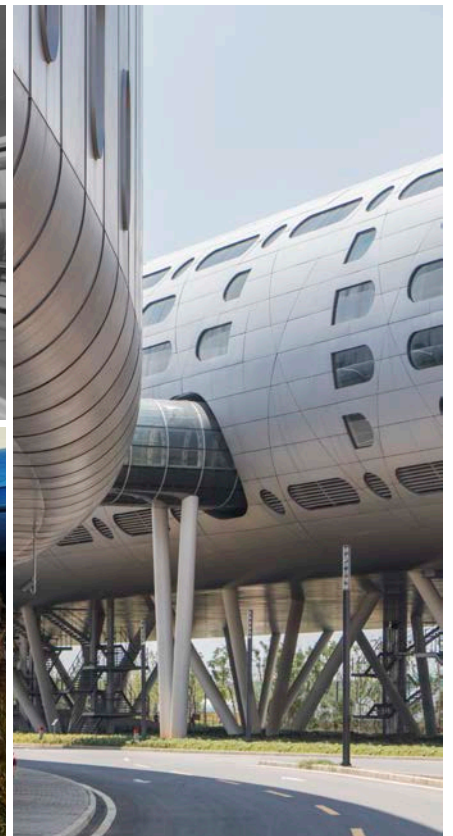
姚仁喜  
大元  
建築工場

CORPORATE



## TSMC NANJING FAB AND DESIGN CENTER

Completed: 2018 / Tube: 5 stories / Gate: 3 stories+B2



KRIS  
YAO  
ARTECH

姚仁喜  
大元  
建築工場

CORPORATE



## FOXCONN SHANGHAI HEADQUATERS

Completed: 2018 / 21 stories+B4 / GAF: 83,181 m<sup>2</sup>





KRIS  
YAO  
ARTECH

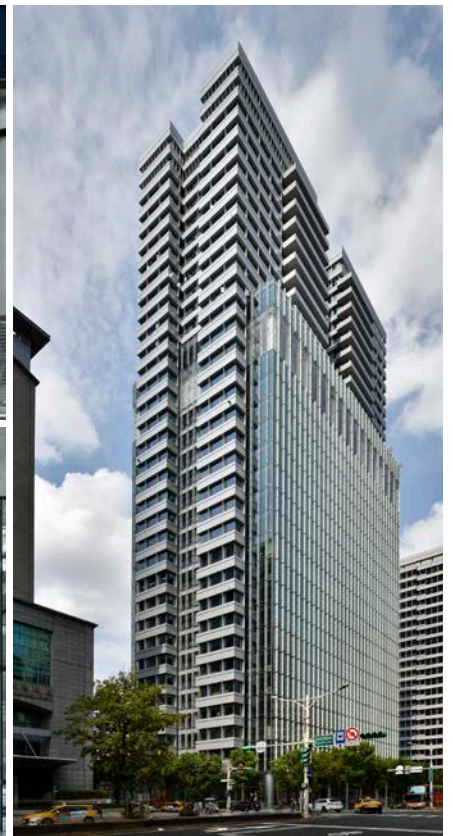
姚仁喜  
大元  
建築工場

CORPORATE



## UDN GROUP OFFICE AND RESIDENTIAL COMPLEX

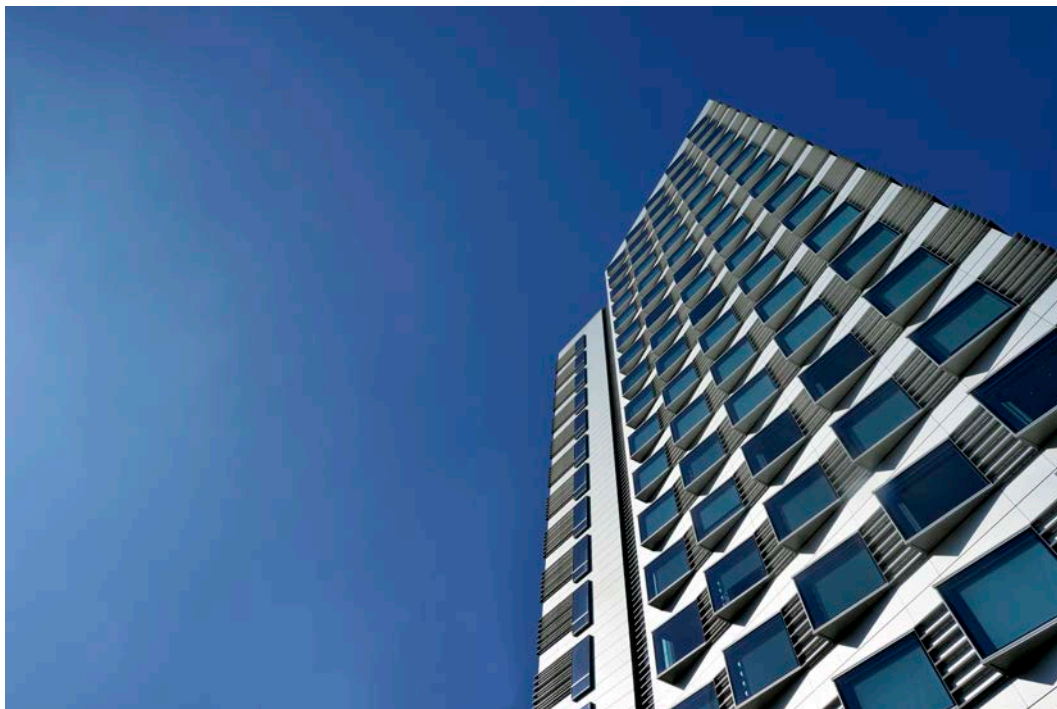
Completed: 2019 / 30 stories+B5 / GAF: 60,147 m2



KRIS  
YAO  
ARTECH

姚仁喜  
大元  
建築工場

HOTELS



## HUMBLE HOUSE

Completed: 2013 / 22 stories+B5 / GFA: 55,010 m<sup>2</sup>





KRIS  
YAO  
ARTECH

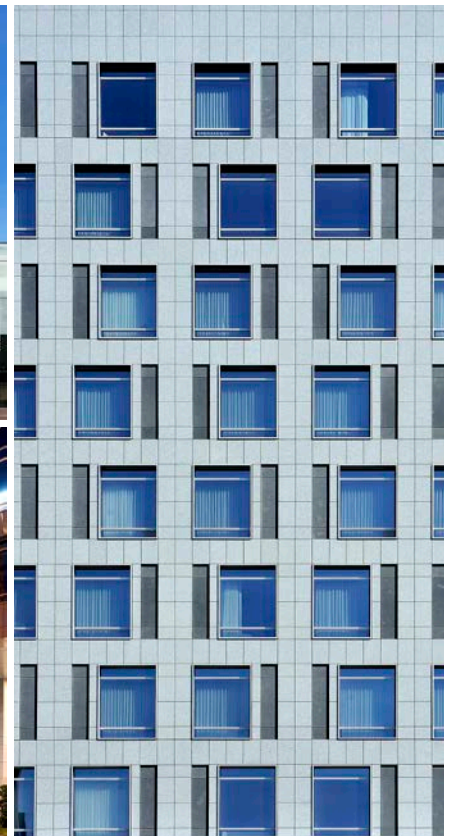
姚仁喜  
大元  
建築工場

HOTELS



## MERIDIAN HOTEL AND OFFICE COMPLEX

Completed: 2010 / 21 stories+B3 / GFA: 80,012 m<sup>2</sup>





KRIS  
YAO  
ARTECH

姚仁喜  
大元  
建築工場

TRANSPORTATION

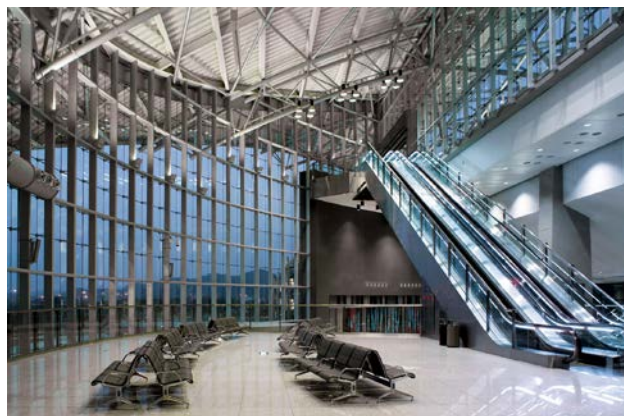


## TAIWAN HIGH SPEED RAIL HSINCHU STATION

Completed: 2006 / 3 stories / GFA: 20,360 m<sup>2</sup>

2006 1st Prize, The Taiwan Annual Architecture Awards

2007 Honorable Mention, 6th Annual Far Eastern Architectural Design Award

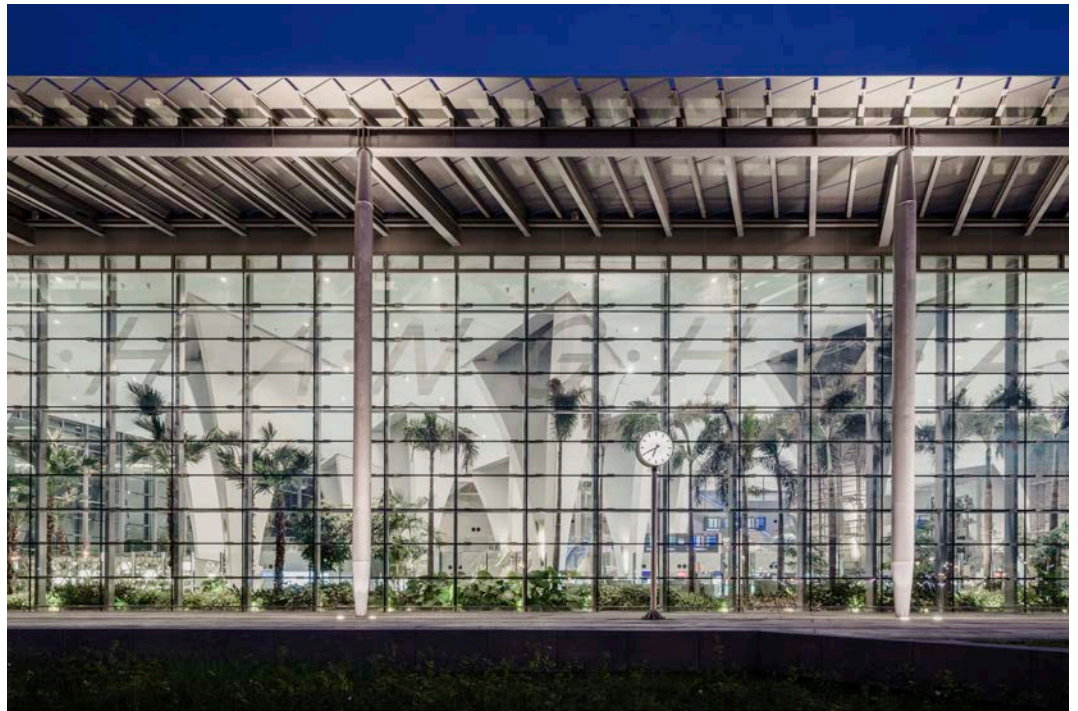




KRIS  
YAO  
ARTECH

姚仁喜  
大元  
建築工場

TRANSPORTATION



## TAIWAN HIGH SPEED RAIL CHANGHUA STATION

Completed: 2015 / 3 stories / GFA: 22,174 m<sup>2</sup>

2016 World Architecture Festival Award (Germany) Finalist - Transport

2016 The 4th Architizer A+ Awards (U.S.A.) Popular Choice Winner





KRIS  
YAO  
ARTECH

姚仁喜  
大元  
建築工場

EDUCATION

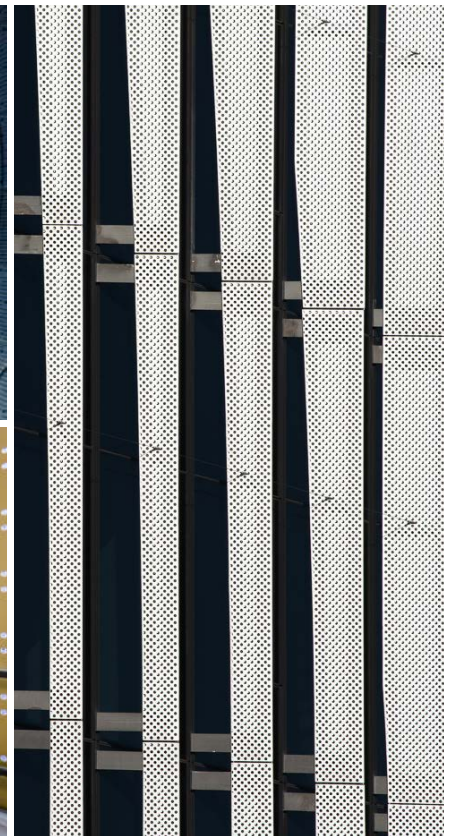


## NTU COSMOLOGY CENTER

Completion: 2017 / 8 stories+B2 / GFA:10,919 m<sup>2</sup>

2018 Architizer A+ Awards (U.S.A.) Special Mention—NTU Cosmology Hall

2018 World Architecture Festival Award (Amsterdam) Finalist - Higher Education and Research - Completed Buildings -  
NTU Cosmology Hall





KRIS  
YAO  
ARTECH

姚仁喜  
大元  
建築工場

EDUCATION



## DHARMA DRUM INSTITUTE OF LIBERAL ARTS

Completed: 2015 / 6 stories+B2 / GFA: 42,456 m<sup>2</sup>

2015/ Taiwan Architecture Award Honorable Mention

2015/ World Architecture Festival Award (Singapore) Shortlisted - Higher Education and Research

2017/ HKIA Cross-Strait Architectural Design Awards Gold Awards- Education & Religious Projects





KRIS  
YAO  
ARTECH

姚仁喜  
大元  
建築工場

EDUCATION



## SHIH CHIEN UNIVERSITY GYMNASIUM AND LIBRARY

Completed: 2009 / 5 stories+B2 / GFA: 26,849 m<sup>2</sup>

2011/ Taiwan Architecture Award Honorable Mention

2012/ Taipei Urban Landscape Award, First Prize Taipei City Government





KRIS  
YAO  
ARTECH

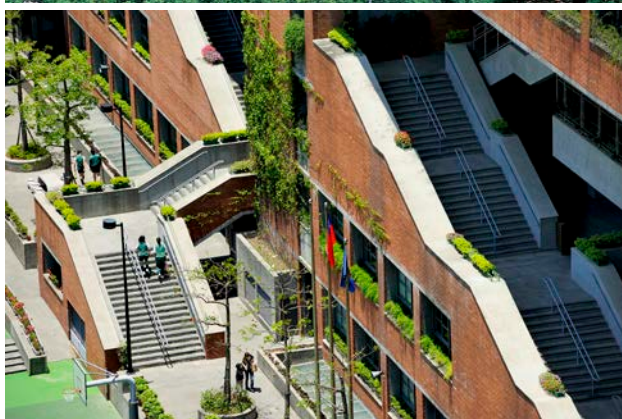
姚仁喜  
大元  
建築工場

EDUCATION



## FU SHIN SCHOOL, TAIPEI

Completed: 2007 / 8 stories+B3 / GFA: 45,474 m<sup>2</sup>





KRIS  
YAO  
ARTECH

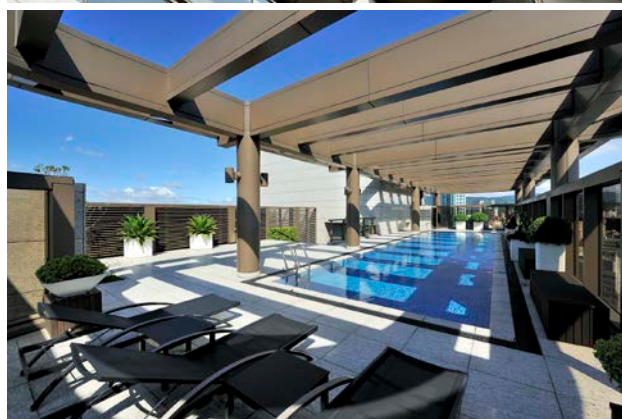
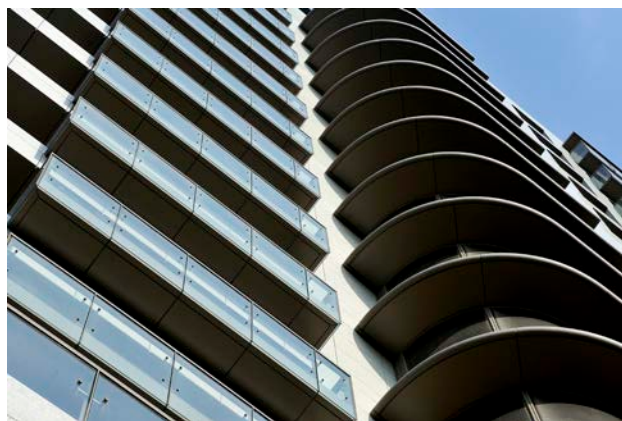
姚仁喜  
大元  
建築工場

RESIDENTIAL



## THE CYPRESS COURT, TAIPEI

Completed: 2010 / 17 stories+B4 / GFA: 14,473 m<sup>2</sup>

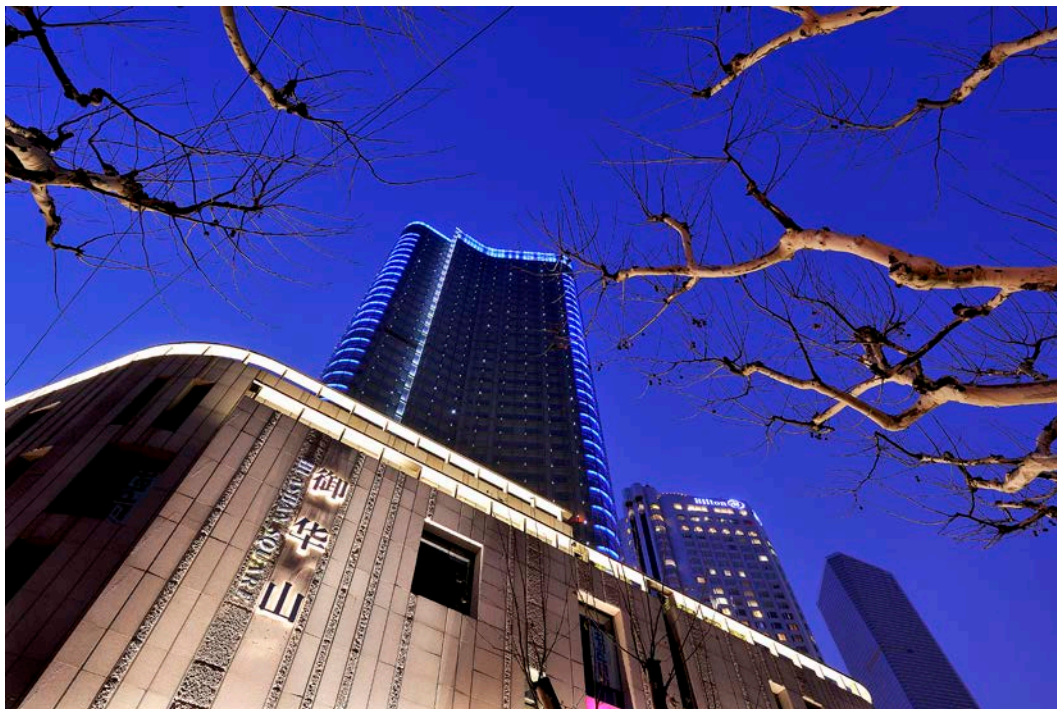




KRIS  
YAO  
ARTECH

姚仁喜  
大元  
建築工場

RESIDENTIAL



## HUASHAN HOUSE, SHANGHAI

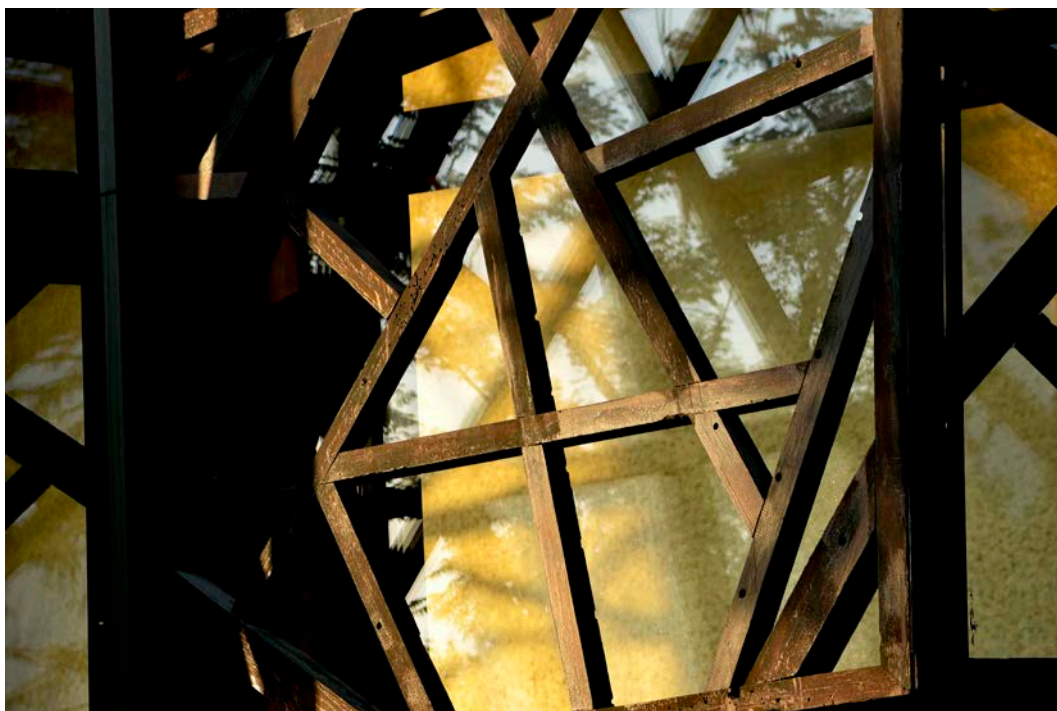
Completed: 2008 / 40 stories+B3 / GFA: 48,729 m<sup>2</sup>



KRIS  
YAO  
ARTECH

姚仁喜  
大元  
建築工場

CONTACT



[www.krisyaoartech.com](http://www.krisyaoartech.com)

TAIPEI

KRIS YAO | ARTECH

11F, 168 Dun Hua North Road, Taipei, Taiwan 105405

TEL: +886-2-2711-5050

FAX: +886-2-2772-2877

[artech@krisyaoartech.com](mailto:artech@krisyaoartech.com)

SHANGHAI

KRIS YAO | ARTECH

Suite 5701, Plaza 66, 1266 Nanjing Road West Shanghai, China 200040

TEL: +86-21-6288-1288

FAX: +86-21-6288-0788

[shanghai@krisyaoartech.com](mailto:shanghai@krisyaoartech.com)

「內境・外象 姚仁喜作品展」上海當代藝術館  
“WithIn. WithOut—KRIS YAO Selected Works Exhibition”  
at the MoCA (Museum of Contemporary Art), Shanghai

「浮光掠影」影片 / “Fleeting Moments” Flim

Youku



Vimeo

